

T PULS radiotracer injector

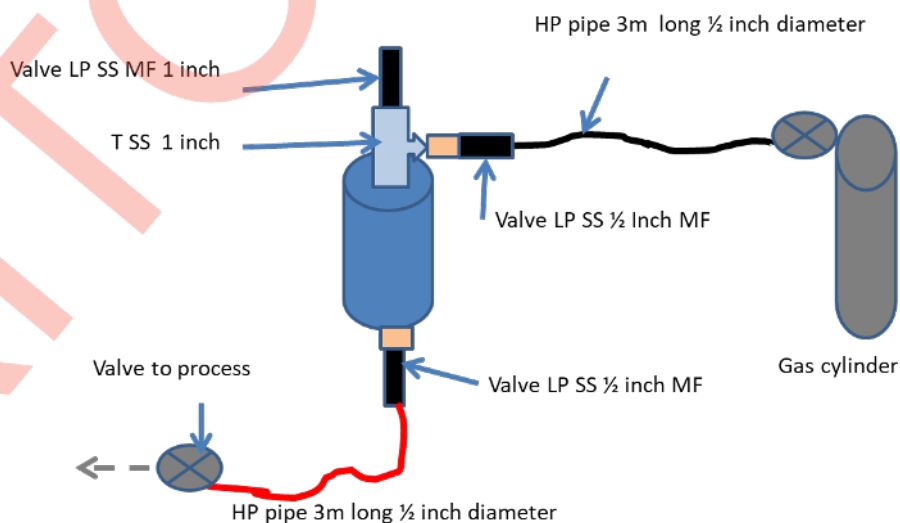


T PULS is a simple system for the injection of radionuclides during studies or analysis.

The system is connected to a gas cylinder at one end and to the subject to be studied or analysed at the other end, via high pressure pipes. (See diagram below)

The radiotracer is transferred from its container (penicilline vial or ampoule) into the shielded injector. (blue).

High pressure from the gas cylinder flushes the radiotracer inside the injector into the study or analysis subject.



Note : The gas tank, pressure gauge and process valve are not supplied. Adapters for locally supplied equipment may also be needed